

CERTIFICATE OF ANALYSIS

IDENTIFICATION

Product: CHROMOGENIC COLIFORMS AGAR BASE

Code 01-695

Batch no.: 102745

Int. Batch 102745

Production date: 4/2013

Expiration date: 3/2017

DEHYDRATED MEDIUM

Colour: Yellow

Appearance: Homogeneous hygroscopic powder

Granulometry: 0,6 - 0,45 mm

Additives: CV Selective Supplement for Coliforms ref.

Remarks:

All raw materials of animal origin, which have been used to manufacture the culture media, come from animals free of BSE.

PREPARED MEDIUM

Directions: 29.45 g/L

Clarity/Colour: Transparent /Yellowish

Deposit: None

Gel strength: Correct

pH after sterilization: 6,84 at 25°C

Sterilization: DO NOT AUTOCLAVE

Remarks:

-

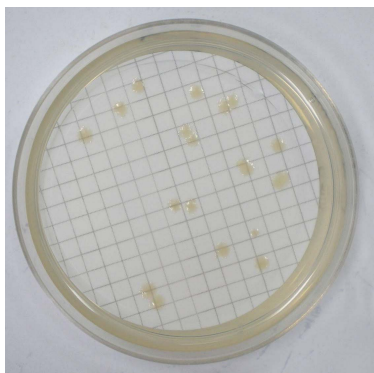
GROWTH CONTROL

Incubation temperature: 35°C±2,0

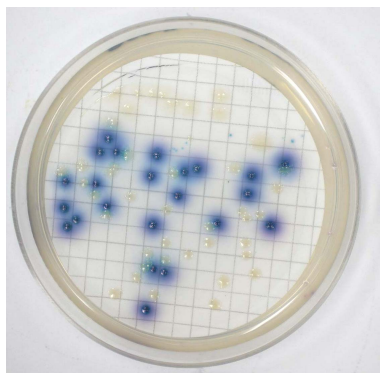
Incubation time: 18-24 h

Remarks: 10-100 cfu (Productivity) // 1.000-10.000 cfu (Selectivity). Membran Filter Method .

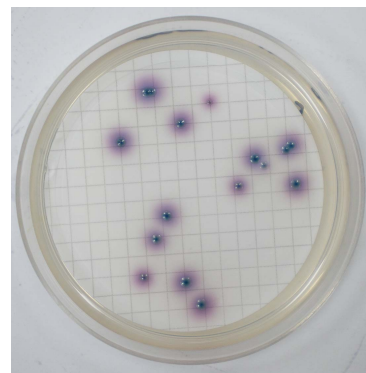
Microorganism	Specification	Pr.	Remarks
<i>Pseudomonas aeruginosa</i> ATCC 27853	Inhibited	0	-
<i>Escherichia coli</i> ATCC 25922	Productivity > 0.70	0,72	Blue-violet colonies. Indol (+)
<i>Escherichia coli</i> ATCC 11775	Productivity > 0.70	0,91	Blue-violet colonies. Indol (+)
<i>Salmonella enterica</i> ATCC 13076	Productivity > 0.70	0,85	Colorless colonies. Indol (-)
<i>Salmonella typhimurium</i> ATCC 14028	Productivity > 0.70	0,89	Colorless colonies. Indol (-)
<i>C.freundii</i> ATCC 8090	Productivity > 0.70	0,93	Salmon to red colonies. Indol (-)
<i>Enterococcus faecalis</i> ATCC 29212	Inhibited	0	-



Salmonella typhimurium ATCC 14028



Salmonella typhimurium ATCC 14028
Escherichia coli ATCC 11775



Escherichia coli ATCC 25922

Photos are not batch-specific.